

# 600 Series™ Unground Thrust Bearings

- **UNGROUND THRUST BEARING**
- **EASY TO USE INCH DIMENSIONS**
- **MODERATE LOADS**
- **MAX SPEED RANGE - 1000 - 1200 RPM**
- **HARDENED RINGS**
- **FULL COMPLEMENT OF BALLS**
- **SOFT STEEL BAND OFFERS EASE OF INSTALLATION**
- **UPPER RING IS FREE TO ROTATE AND HAS CLOSE FIT FOR SHAFTS**
- **LOWER RING IS FIXED AND HAS SHAFT CLEARANCE IN THE BORE**



## BEARING DIMENSIONAL DATA

BEARING	SUFFIX	A BORE	A1 BORE	B O.D.	C HEIGHT	BALLS		WEIGHT (lbs) (kg)
		(in) (mm) +.010/-.000 +.25/-.00	(in) (mm) +/- .010 +/- .25	(in) (mm) +/- .010 +/- .79	(in) (mm) +/- .010 +/- .25	No.	Size	
601™	V	.250 6.35	.275 6.99	27/32 21.43	.333 8.46	10	5/32 3.97	0.03 0.01
602™	V	.375 9.53	.400 10.16	1 3/64 26.59	.359 9.12	14	5/32 3.97	0.06 0.03
602™	3/4 - V	.453 11.51	.478 12.14	55/64 21.83	.281 7.14	15	1/8 45.72	0.03 0.01
603™	V	.500 12.70	.525 13.34	1 17/64 32.15	.437 11.10	10	1/4 35.56	0.09 0.04
603™	1/4 -V	.500 12.70	.525 13.34	1 25.40	.344 8.74	12	3/16 4.76	0.04 0.02
605™	V	.625 15.88	.656 16.66	1 1/8 28.58	.344 8.74	16	5/32 3.97	0.04 0.02
606™	V	.625 15.88	.656 16.66	1 27/64 36.12	.453 11.51	12	1/4 6.35	0.12 0.05
607™	V	.750 19.05	.775 19.69	1 21/32 42.07	.545 13.84	15	1/4 6.35	0.19 0.09
608™	V	.875 22.23	.900 22.86	1 57/64 48.02	.594 15.09	17	1/4 6.35	0.28 0.13
608™	1/4 -V	.984 24.99	1.031 26.19	1 3/4 44.45	.625 15.87	16	1/4 6.35	0.19 0.09

**Notes**

Balls - Carbon Steel Grade 200

Bands - Carbon Steel Soft

Bearings Oiled with a Rust Preventative

Washers - Carbon Steel Case Hard

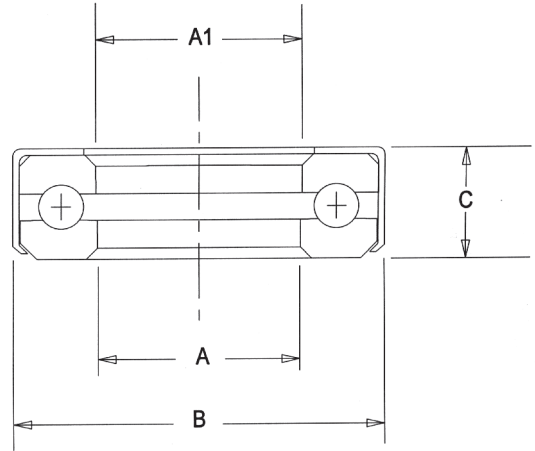
All Bearings Marked on Band with "Designation Nice USA" as Shown"

All bearing designations listed herein are trademarks of RBC Nice® Bearings.

# 600 Series™ Unground Thrust Bearings

The 600 Series™ bearing is designed for moderate speeds and medium thrust loads. These bearings utilize a full ball complement. Rings are cold forged from hardenable strip steel and are carefully heat treated. These bearings may be plated or manufactured from stainless steel upon request.

The entire assembly is housed in a soft steel band which lends itself to an easy press fit into a housing. The band also serves as a dust shield and helps retain the bearing lubricant. The upper ring is free to rotate in the band and has a close fit in the bore for the shaft. The lower ring is fixed in the band and has a shaft clearance in the bore.



## THRUST CAPACITY

	REVOLUTIONS PER MINUTE					
	10 (lbs) (N)	50 (lbs) (N)	100 (lbs) (N)	250 (lbs) (N)	500 (lbs) (N)	1000 (lbs) (N)
	304 1353	246 1095	182 810	98 436	71 316	51 227
	426 1896	344 1531	254 1130	138 614	100 445	71 316
	292 1299	236 1050	174 774	94 418	68 303	48 214
	780 3471	630 2804	465 2069	252 1121	182 810	129 574
	526 2341	425 1891	314 1397	170 757	123 547	87 387
	858 3818	693 3084	511 2274	277 1233	200 890	143 636
	936 4165	750 3338	558 2483	302 1344	218 970	155 690
	1170 5207	945 4205	698 3106	378 1682	273 1215	194 863
	1326 5901	1071 4766	791 3520	428 1905	309 1375	220 979
	1248 5551	1008 4484	744 3309	403 1793	291 1294	207 921

# 600 Series™ Unground Thrust Bearings (con't)

- **UNGROUND THRUST BEARING**
- **EASY TO USE INCH DIMENSIONS**
- **MODERATE LOADS**
- **MAX SPEED RANGE - 1000 - 1200 RPM**
- **HARDENED RINGS**
- **FULL COMPLEMENT OF BALLS**
- **SOFT STEEL BAND OFFERS EASE OF INSTALLATION**
- **UPPER RING IS FREE TO ROTATE AND HAS CLOSE FIT FOR SHAFTS**
- **LOWER RING IS FIXED AND HAS SHAFT CLEARANCE IN THE BORE**



## BEARING DIMENSIONAL DATA

BEARING	SUFFIX	A	A1	B	C	BALLS		WEIGHT (lbs) (kg)
		BORE	BORE	O.D.	HEIGHT	(in)	(mm)	
		(in) (mm) +.010/-.000 +.25/-.00	(in) (mm) +/- .010 +/- .25	(in) (mm) +/- .010 +/- .79	(in) (mm) +/- .010 +/- .25	No.	Size	
609™	V	1.000 25.40	1.075 27.31	2 50.80	.630 16.00	12	3/8 9.53	0.30 0.14
610™	V	1.000 25.40	1.031 26.19	1 31/32 50.01	.625 15.88	18	1/4 6.35	0.29 0.13
610™	1/4 -V	1.016 25.81	1.031 26.19	1 3/4 44.45	.625 15.88	16	1/4 6.35	0.21 0.10
611™	V	1.063 27.00	1.094 27.79	1 31/32 50.01	.625 15.88	18	1/4 6.35	0.26 0.12
613™	V	1.125 28.58	1.150 29.21	2 3/32 53.18	.625 15.88	19	1/4 6.35	0.31 0.14
614™	V	1.187 30.15	1.212 30.78	2 3/32 55.56	.625 15.88	19	1/4 6.35	0.32 0.15
616™	V	1.25 31.75	1.275 32.39	2 11/32 59.53	.625 15.88	23	1/4 6.35	0.4 0.18
618™	V	1.375 34.92	1.400 35.56	2 15/32 62.71	.625 15.88	23	1/4 6.35	0.45 0.20
619™	V	1.437 36.50	1.462 37.13	2 15/32 62.71	.625 15.88	23	1/4 6.35	0.43 0.20
621™	V	1.500 38.10	1.525 38.74	2 19/32 65.88	.625 15.88	25	1/4 6.35	0.45 0.20

**Notes**

Balls - Carbon Steel Grade 200

Bands - Carbon Steel Soft

Washers - Carbon Steel Case Hard

Bearings Oiled with a Rust Preventative

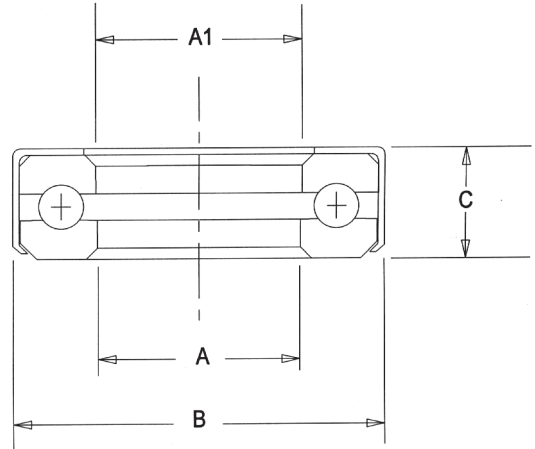
All Bearings Marked on Band with "Designation Nice USA" as Shown"

All bearing designations listed herein are trademarks of RBC Nice® Bearings.

# 600 Series™ Unground Thrust Bearings (con't)

The 600 Series™ bearing is designed for moderate speeds and medium thrust loads. These bearings utilize a full ball complement. Rings are cold forged from hardenable strip steel and are carefully heat treated. These bearings may be plated or manufactured from stainless steel upon request.

The entire assembly is housed in a soft steel band which lends itself to an easy press fit into a housing. The band also serves as a dust shield and helps retain the bearing lubricant. The upper ring is free to rotate in the band and has a close fit in the bore for the shaft. The lower ring is fixed in the band and has a shaft clearance in the bore.



## THRUST CAPACITY

	REVOLUTIONS PER MINUTE					
	10 (lbs) (N)	50 (lbs) (N)	100 (lbs) (N)	250 (lbs) (N)	500 (lbs) (N)	1000 (lbs) (N)
	1706 7592	1378 6132	1017 4526	551 2452	398 1771	284 1264
	1404 6248	1134 5046	837 3725	454 2020	328 1460	233 1037
	1248 5554	1008 4486	744 3311	403 1793	291 1295	207 921
	1404 6248	1134 5046	837 3725	454 2020	328 1460	233 1037
	1482 6595	1197 5327	883 3929	479 2132	346 1540	246 1095
	1482 6592	1197 5325	883 3928	479 2131	346 1539	246 1094
	1794 7983	1449 6448	1069 4757	579 2577	419 1865	298 1326
	1794 7980	1449 6445	1069 4755	579 2576	419 1864	298 1326
	1794 7983	1449 6448	1069 4757	579 2577	419 1865	298 1326
	1950 8678	1575 7009	1162 5171	630 2804	455 2025	324 1442