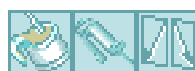
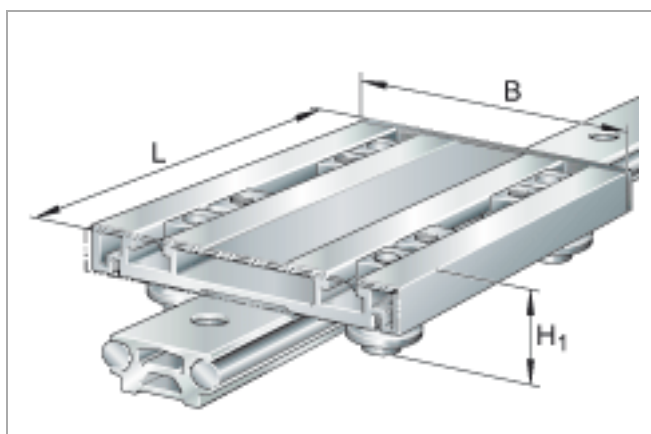




Carriage LFCL

hollow section carriage, clearance-free; corrosion-resistant
design possible

The datasheet is only an overview of dimensions and basic load ratings for the selected series. Please ensure that you note all the guidance in these overview pages. Further information is given on many products under the menu item "Description". You can also obtain comprehensive information material via Catalogue selection (<http://www.ina.de/content.ina.de/en/services/mediathek/library/library.jsp>), by e-mail (kataloge@de.ina.com) or telephone +49 (91 32) 82 - 28 97.



	H ₁ mm	B mm	L mm	
LFCL25	30,5	80	110	
LFCL42	38,1	116	150	
LFCL86	48,4	190	235	

Figure 1

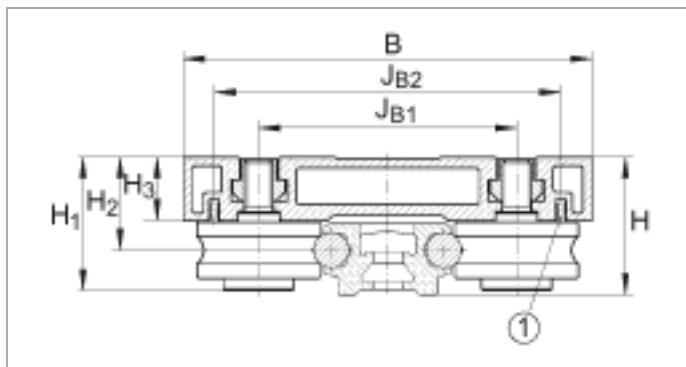


Figure 2

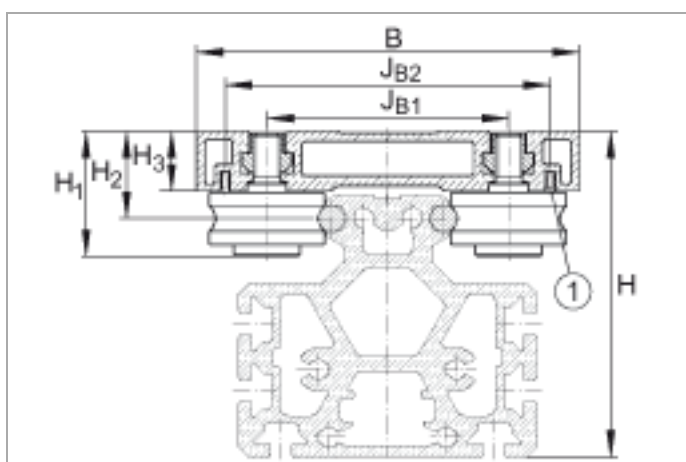


Figure 3

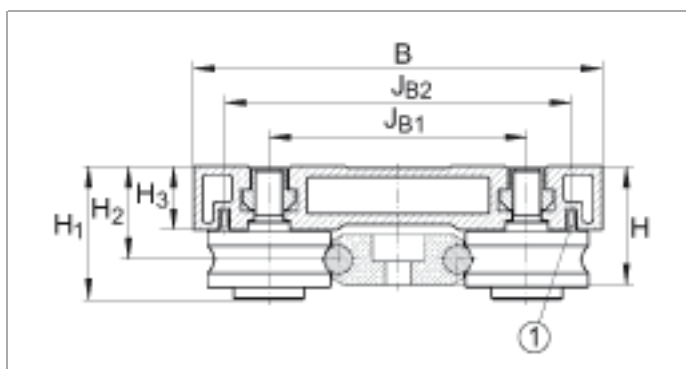


Figure 4

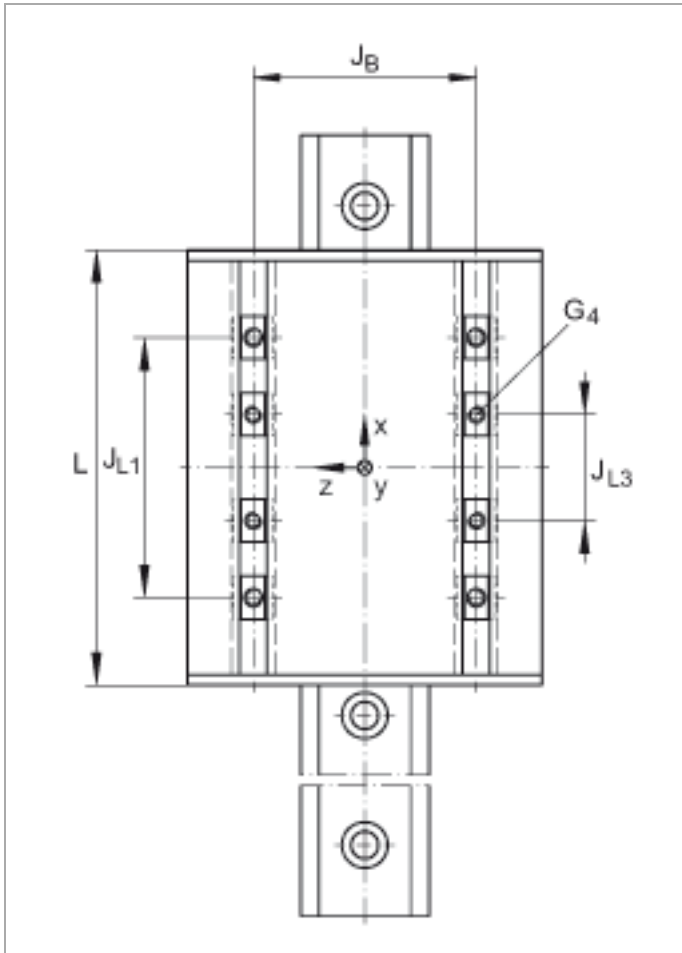
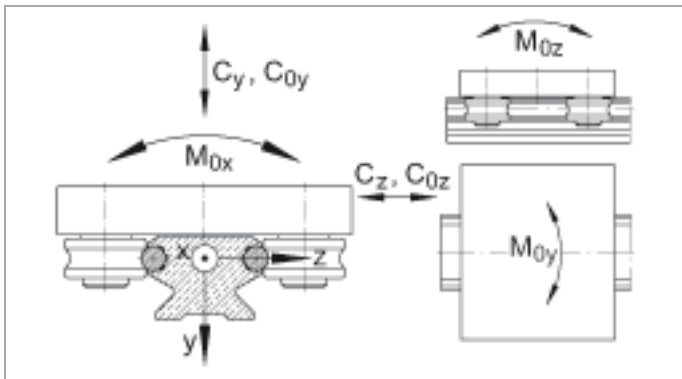


Figure 5





LFCL25

Figure 1 , Figure 2 , Figure 3 , Figure 4 , Figure 5

H ₁	30,5 mm	
B	80 mm	
L	110 mm	
1)		Threaded slot or screw channel for screws M3
G ₄	M6	Maximum screw depth: M6 = 10 mm M8 = 12 mm M10 = 14 mm
H		Total height of carriage and guideway: H = 32,1 mm For LFS, -C, -CE, -CEE, -E, -EE, -N, -NZZ H = 63,1 mm For LFS..-M The guideway LFS..-M can only be combined with carriages with adjustable clearance. If SF and LFCL carriages are to be used, please contact us first
H ₂	21,5 mm	Tolerance: +0,3
H ₃	15,4 mm	
J _B	47 mm	
J _{B1}	47 mm	
J _{B2}	69 mm	
J _{L1}	52 mm	
J _{L3 max}	26 mm	
J _{L3 min}	13 mm	
mw	440 g	Mass of carriage The basic load ratings are not valid for "-RB" designs.
C _y	4600 N	Basic dynamic load rating in y direction
C _{0y}	2400 N	Basic static load rating in y direction
C _z	7230 N	Basic dynamic load rating in z direction
C _{0z}	4500 N	Basic static load rating in z direction
M _{0x}	25 Nm	Static moment rating about X axis
M _{0y}	120 Nm	Static moment rating about Y axis
M _{0z}	65 Nm	Static moment rating about Z axis
		Ordering designation: - Corrosion-resistant design: Carriage: LFCL..-RB Guideway: LFS..-RB Track roller: LFR..-2RSR-RB



- Guideway without holes:

LFS...OL

The design of the hollow sections is dependent on the size.

LFR50/8-6-2Z

Track roller used

For shaft diameter: 6 mm

For ordering of replacement parts, please contact us.

LFS25

The calculation of basic load ratings and moment ratings is based on the use of this guideway

LFCL42

Figure 1 , Figure 2 , Figure 3 , Figure 4 , Figure 5

H ₁	38,1 mm	
B	116 mm	
L	150 mm	
1)		Threaded slot or screw channel for screws M3
G ₄	M8	Maximum screw depth: M6 = 10 mm M8 = 12 mm M10 = 14 mm
H		Total height of carriage and guideway: H = 39 mm For LFS, -C, -CE, -CEE, -E, -EE, -N, -NZZ H = 33,9 mm For LFS..-F
H ₂	26,4 mm	Tolerance: +0,3
H ₃	18 mm	
J _B	73 mm	
J _{B1}	73 mm	
J _{B2}	98,5 mm	
J _{L1}	85 mm	
J _{L3 max}	55 mm	
J _{L3 min}	15 mm	
mw	1000 g	Mass of carriage The basic load ratings are not valid for "-RB" designs.
C _y	10200 N	Basic dynamic load rating in y direction
C _{0y}	5480 N	Basic static load rating in y direction
C _z	16900 N	Basic dynamic load rating in z direction
C _{0z}	10000 N	Basic static load rating in z direction
M _x	170 Nm	Dynamic moment rating about X axis
M _{0x}	85 Nm	Static moment rating about X axis
M _y	720 Nm	Dynamic moment rating about Y axis
M _{0y}	425 Nm	Static moment rating about Y axis
M _z	430 Nm	Dynamic moment rating about Z axis
M _{0z}	230 Nm	Static moment rating about Z axis
		Ordering designation: - Corrosion-resistant design: Carriage: LFCL..-RB



Guideway: LFS..-RB
Track roller: LFR..-2RSR-RB
- Guideway without holes:
LFS..-OL

The design of the hollow sections is dependent on the size.

LFR5201-10-2Z

Track roller used
For shaft diameter: 10 mm
For ordering of replacement parts, please contact us.

LFS42

The calculation of basic load ratings and moment ratings is based on the use of this guideway

LFCL86

Figure 1 , Figure 2 , Figure 3 , Figure 4 , Figure 5

H ₁	48,4 mm	
B	190 mm	
L	235 mm	
1)		Threaded slot or screw channel for screws M3
G ₄	M10	Maximum screw depth: M6 = 10 mm M8 = 12 mm M10 = 14 mm
H		Total height of carriage and guideway: H = 59 mm For LFS, -C, -CE, -CEE, -E, -EE, -N, -NZZ
H ₂	33,9 mm	Tolerance: +0,3
H ₃	23,4 mm	
J _B	124 mm	
J _{B1}	124 mm	
J _{B2}	151,5 mm	
J _{L1}	155 mm	
J _{L3 max}	119 mm	
J _{L3 min}	18 mm	
m _W	2200 g	Mass of carriage The basic load ratings are not valid for "-RB" designs.
C _y	17800 N	Basic dynamic load rating in y direction
C _{0y}	8850 N	Basic static load rating in y direction
C _z	28400 N	Basic dynamic load rating in z direction
C _{0z}	15500 N	Basic static load rating in z direction
M _x	680 Nm	Dynamic moment rating about X axis
M _{0x}	335 Nm	Static moment rating about X axis
M _y	2200 Nm	Dynamic moment rating about Y axis
M _{0y}	1190 Nm	Static moment rating about Y axis
M _z	1380 Nm	Dynamic moment rating about Z axis
M _{0z}	680 Nm	Static moment rating about Z axis
		Ordering designation: - Corrosion-resistant design: Carriage: LFCL...-RB Guideway: LFS...-RB Track roller: LFR...-2RSR-RB

- Guideway without holes:

LFS...OL

Additional T-slot in the centre of the carriage

The design of the hollow sections is dependent on the size.

LFR5301-10-2Z

Track roller used

For shaft diameter: 10 mm

For ordering of replacement parts, please contact us.

LFS86

The calculation of basic load ratings and moment ratings is based on the use of this guideway