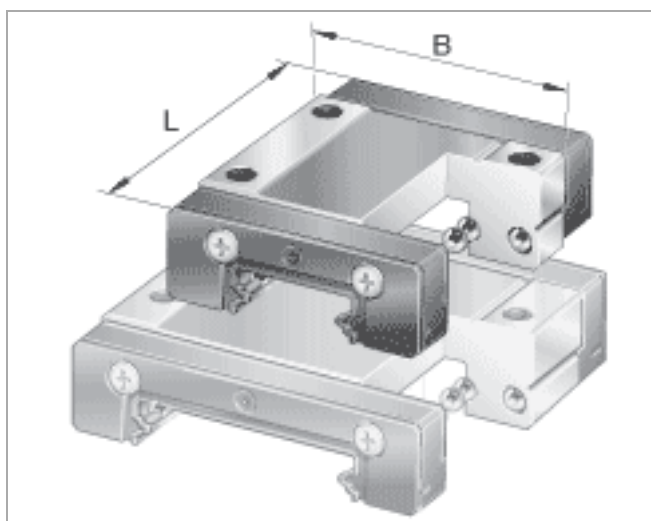




## Carriages KWEM

standard carriage for miniature linear recirculating ball bearing and guideway assembly, corrosion-resistant, two-row

The datasheet is only an overview of dimensions and basic load ratings for the selected series. Please ensure that you note all the guidance in these overview pages. Further information is given on many products under the menu item "Description". You can also obtain comprehensive information material via Catalogue selection (<http://www.ina.de/content.ina.de/en/services/mediathek/library/library.jsp>), by e-mail ([kataloge@de.ina.com](mailto:kataloge@de.ina.com)) or telephone +49 (91 32) 82 - 28 97.



	H mm	B mm	L mm	
KWEM5		6	12	19
KWEM7		8	17	23,5
KWEM9		10	20	30
KWEM12		13	27	34
KWEM15		16	32	42

Figure 1

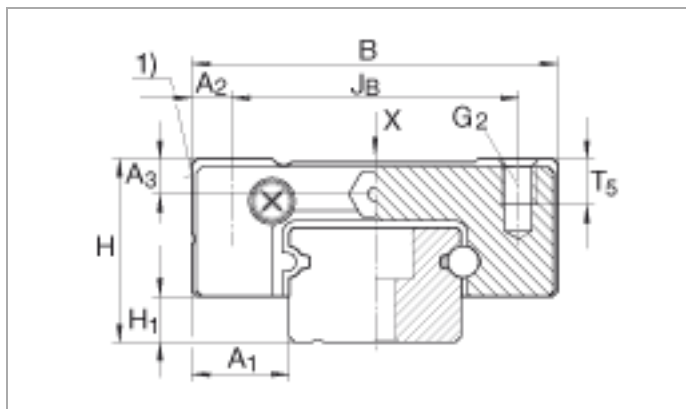


Figure 2

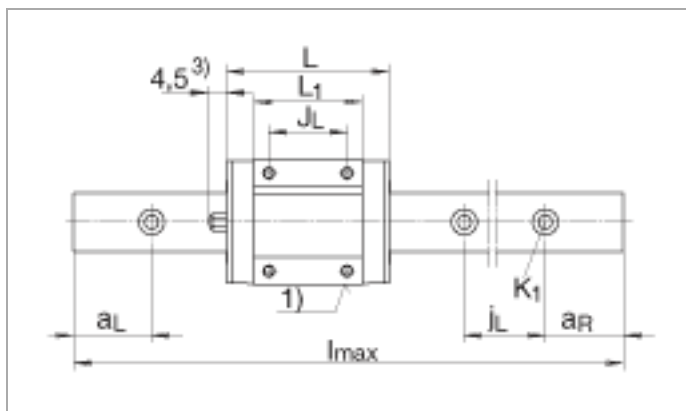


Figure 3

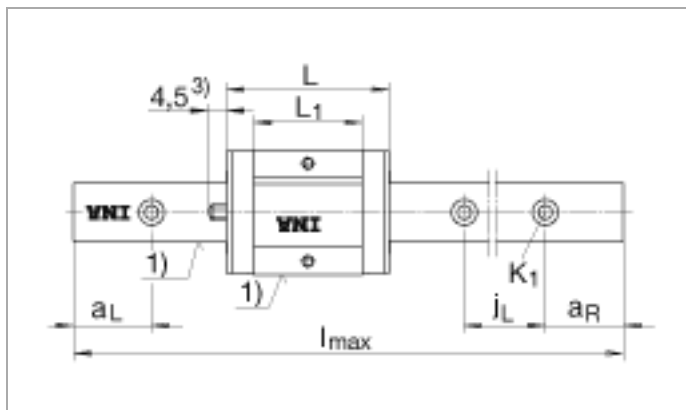
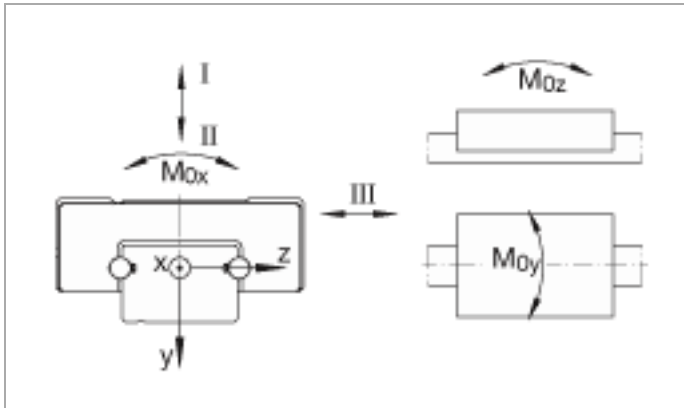


Figure 4



## KWEM5

Figure 1 , Figure 3 , Figure 4

H	6 mm	
B	12 mm	
L	19 mm	
1)		Locating face
A1	3,5 mm	
A2	2 mm	
A3	1,2 mm	
G2	M2	For screws to DIN ISO 4 762-12.9 If there is a possibility of settling, the fixing screws should be secured against rotation. Max. tightening torque (Nm): M2 = 0,6 M3 = 2,2 M4 = 5
H1	1 mm	
J <sub>B</sub>	8 mm	
L1	12,6 mm	
T <sub>5</sub>	1,5 mm	
mw	0,004 kg	Mass of carriage
C <sub>I</sub>	534 N	Load direction I: compressive load
C <sub>0 I</sub>	1090 N	Load direction I: compressive load
C <sub>II</sub>	534 N	Load direction II: tensile load
C <sub>0 II</sub>	1090 N	Load direction II: tensile load
C <sub>III</sub>	470 N	Load direction III: lateral load
C <sub>0 III</sub>	916 N	Load direction III: lateral load
M <sub>0x</sub>	2,9 Nm	Moment rating
M <sub>0y</sub>	1,9 Nm	Moment rating
M <sub>0z</sub>	2,3 Nm	Moment rating

## KWEM7

Figure 1 , Figure 2 , Figure 4

H	8 mm	
B	17 mm	
L	23,5 mm	
1)		Locating face
A1	5 mm	
A2	2,5 mm	
A3	1,5 mm	
G2	M2	For screws to DIN ISO 4 762-12.9 If there is a possibility of settling, the fixing screws should be secured against rotation. Max. tightening torque (Nm): M2 = 0,6 M3 = 2,2 M4 = 5
H1	1,5 mm	
J <sub>B</sub>	12 mm	
J <sub>L</sub>	8 mm	
L1	14,3 mm	
T <sub>5</sub>	2,5 mm	
mw	0,01 kg	Mass of carriage
C <sub>I</sub>	1051 N	Load direction I: compressive load
C <sub>0 I</sub>	1890 N	Load direction I: compressive load
C <sub>II</sub>	1051 N	Load direction II: tensile load
C <sub>0 II</sub>	1890 N	Load direction II: tensile load
C <sub>III</sub>	925 N	Load direction III: lateral load
C <sub>0 III</sub>	1588 N	Load direction III: lateral load
M <sub>0x</sub>	6,9 Nm	Moment rating
M <sub>0y</sub>	3,9 Nm	Moment rating
M <sub>0z</sub>	4,7 Nm	Moment rating

## KWEM9

Figure 1 , Figure 2 , Figure 4

H	10 mm	
B	20 mm	
L	30 mm	
1)		Locating face
A1	5,5 mm	
A2	2,5 mm	
A3	2,2 mm	
G2	M3	For screws to DIN ISO 4 762-12.9 If there is a possibility of settling, the fixing screws should be secured against rotation. Max. tightening torque (Nm): M2 = 0,6 M3 = 2,2 M4 = 5
H1	2 mm	
J <sub>B</sub>	15 mm	
J <sub>L</sub>	10 mm	
L1	20,8 mm	
T <sub>5</sub>	3 mm	
mw	0,019 kg	Mass of carriage
C <sub>I</sub>	1430 N	Load direction I: compressive load
C <sub>0 I</sub>	2760 N	Load direction I: compressive load
C <sub>II</sub>	1430 N	Load direction II: tensile load
C <sub>0 II</sub>	2760 N	Load direction II: tensile load
C <sub>III</sub>	1258 N	Load direction III: lateral load
C <sub>0 III</sub>	2318 N	Load direction III: lateral load
M <sub>0x</sub>	12,8 Nm	Moment rating
M <sub>0y</sub>	7,6 Nm	Moment rating
M <sub>0z</sub>	9,1 Nm	Moment rating

## KWEM12

Figure 1 , Figure 2 , Figure 4

H	13 mm	
B	27 mm	
L	34 mm	
1)		Locating face
A1	7,5 mm	
A2	3,5 mm	
A3	2,7 mm	
G2	M3	For screws to DIN ISO 4 762-12.9 If there is a possibility of settling, the fixing screws should be secured against rotation. Max. tightening torque (Nm): M2 = 0,6 M3 = 2,2 M4 = 5
H1	3 mm	
J <sub>B</sub>	20 mm	
J <sub>L</sub>	15 mm	
L1	21,6 mm	
T <sub>5</sub>	3,5 mm	
mw	0,035 kg	Mass of carriage
C <sub>I</sub>	2631 N	Load direction I: compressive load
C <sub>0 I</sub>	4290 N	Load direction I: compressive load
C <sub>II</sub>	2631 N	Load direction II: tensile load
C <sub>0 II</sub>	4290 N	Load direction II: tensile load
C <sub>III</sub>	2315 N	Load direction III: lateral load
C <sub>0 III</sub>	3604 N	Load direction III: lateral load
M <sub>0x</sub>	26,6 Nm	Moment rating
M <sub>0y</sub>	12,9 Nm	Moment rating
M <sub>0z</sub>	15,4 Nm	Moment rating

## KWEM15

Figure 1 , Figure 2 , Figure 4

H	16 mm	
B	32 mm	
L	42 mm	
1)		Locating face
3)		A lubrication nipple is included with size 15.
A <sub>1</sub>	8,5 mm	
A <sub>2</sub>	3,5 mm	
A <sub>3</sub>	3,1 mm	
G <sub>2</sub>	M3	For screws to DIN ISO 4 762-12.9 If there is a possibility of settling, the fixing screws should be secured against rotation. Max. tightening torque (Nm): M2 = 0,6 M3 = 2,2 M4 = 5
H <sub>1</sub>	4 mm	
J <sub>B</sub>	25 mm	
J <sub>L</sub>	20 mm	
L <sub>1</sub>	27,8 mm	
T <sub>5</sub>	4 mm	
mw	0,064 kg	Mass of carriage
C <sub>I</sub>	3934 N	Load direction I: compressive load
C <sub>0 I</sub>	6490 N	Load direction I: compressive load
C <sub>II</sub>	3934 N	Load direction II: tensile load
C <sub>0 II</sub>	6490 N	Load direction II: tensile load
C <sub>III</sub>	3462 N	Load direction III: lateral load
C <sub>0 III</sub>	5452 N	Load direction III: lateral load
M <sub>0x</sub>	50 Nm	Moment rating
M <sub>0y</sub>	24,9 Nm	Moment rating
M <sub>0z</sub>	29,7 Nm	Moment rating