

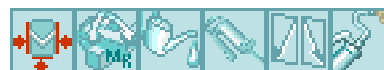
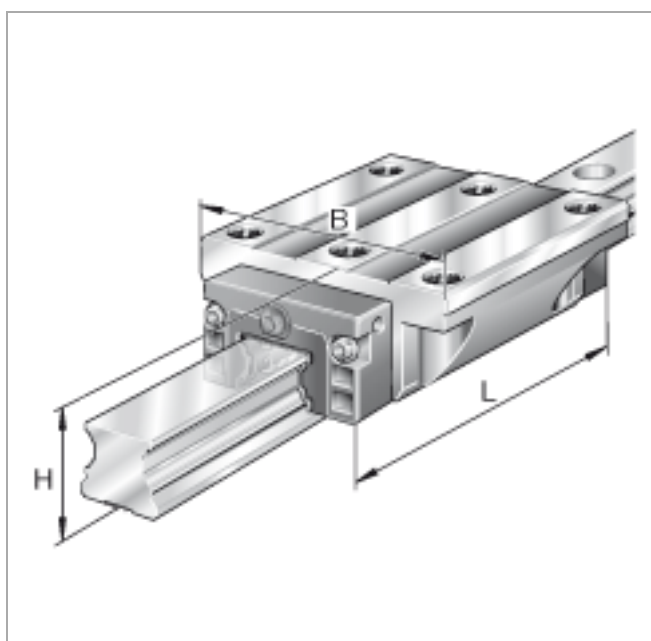


Ball monorail guidance systems

KUVE..-B

standard carriage, four-row, full complement ball set;
corrosion-resistant design possible

The datasheet is only an overview of dimensions and basic load ratings for the selected series. Please ensure that you note all the guidance in these overview pages. Further information is given on many products under the menu item "Description". You can also obtain comprehensive information material via Catalogue selection (<http://www.ina.de/content.ina.de/en/services/mediathek/library/library.jsp>), by e-mail (kataloge@de.ina.com) or telephone +49 (91 32) 82 - 28 97.



	H mm	B mm	L mm	
KUVE15-B	24	47	59,6	
KUVE20-B	30	63	69,8	
KUVE25-B	36	70	81,7	
KUVE30-B	42	90	97,4	
KUVE35-B	48	100	110,4	
KUVE45-B	60	120	139	
KUVE55-B	70	140	172	



Figure 3

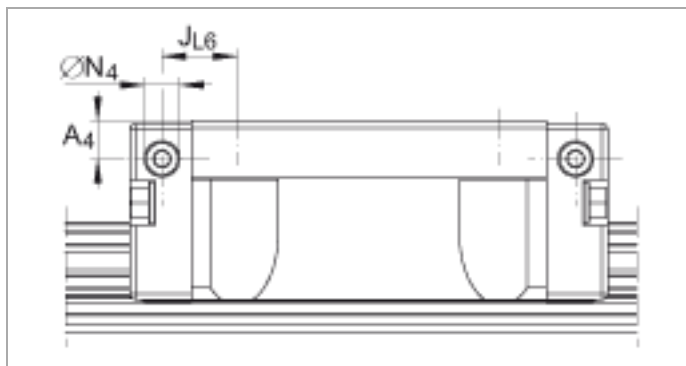


Figure 4

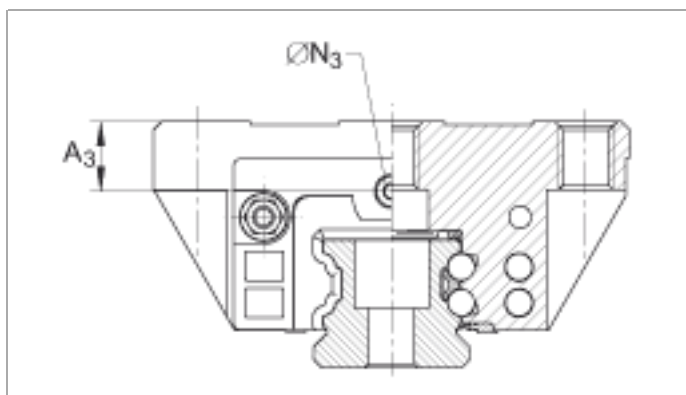


Figure 5

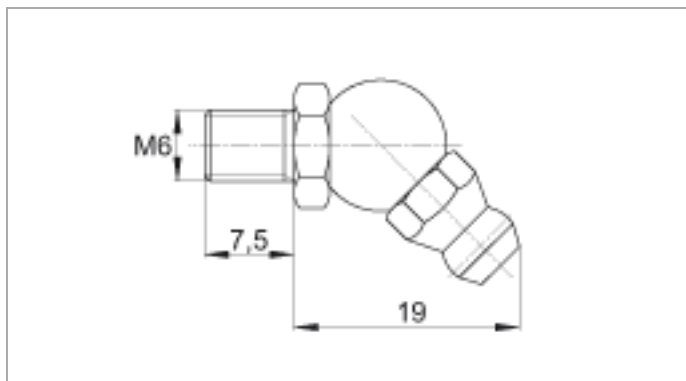


Figure 6

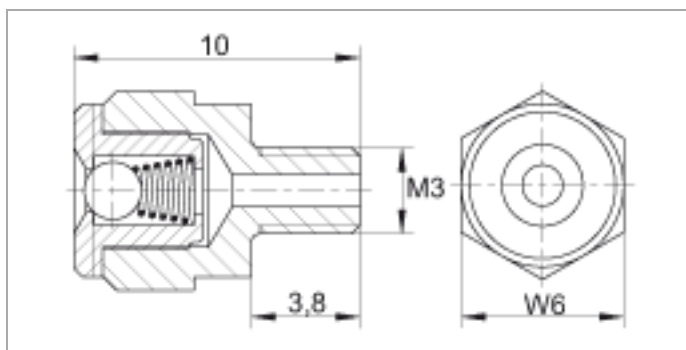
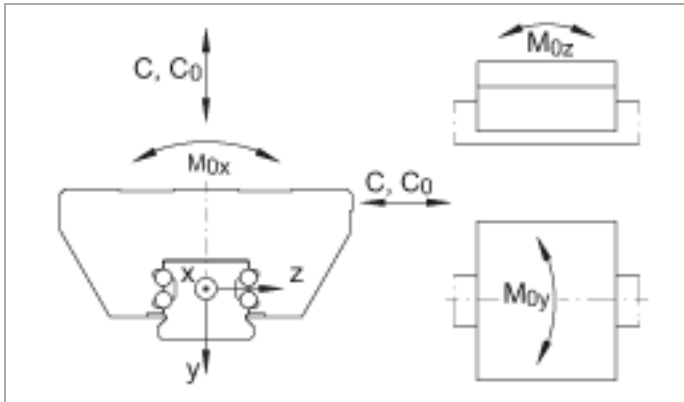


Figure 7





KUVE15-B

Figure 1 , Figure 2 , Figure 3 , Figure 4 , Figure 5 , Figure 6 , Figure 7

H	24 mm	
B	47 mm	
L	59,6 mm	
1)		Locating face
2)		Marking
3)		Lubrication nipple to DIN 3 405 M3 is supplied loose
A1	16 mm	
A2	4,5 mm	
A3	4,3 mm	
A4	3,2 mm	
aL max	53 mm	a L and a R are dependent on the length l max of the guideway
aL min	20 mm	a L and a R are dependent on the length l max of the guideway
aR max	53 mm	a L and a R are dependent on the length l max of the guideway
aR min	20 mm	a L and a R are dependent on the length l max of the guideway
b	15 mm	Tolerance: -0,005 / -0,03
G2	M5	For screws to DIN ISO 4762-12.9 Max. tightening torque in Nm: M5 = 5,8 M6 = 10 M8 = 24 M10 = 41 M12 = 83 M14 = 140 If there is a possibility of settling, the fixing screws should be secured against rotation.
h	15 mm	
H1	4,3 mm	
h1	8,15 mm	
H4	7,6 mm	
H5	4,75 mm	
J _B	38 mm	
J _L	30 mm	
j _L	60 mm	
JL6	9,1 mm	
JLZ	26 mm	
K1	M4	For screws to DIN ISO 4762-12.9 Max. tightening torque in Nm: M3 = 2,5

		<p>M4 = 5 M5 = 10 M6 = 17 M8 = 41 M10 = 83 M12 = 140 M14 = 220 M16 = 340</p> <p>If there is a possibility of settling, the fixing screws should be secured against rotation</p>
K3	M4	<p>For screws to DIN ISO 4762-12.9</p> <p>Max. tightening torque in Nm:</p> <p>M3 = 2,5 M4 = 5 M5 = 10 M6 = 17 M8 = 41 M10 = 83 M12 = 140 M14 = 220 M16 = 340</p> <p>If there is a possibility of settling, the fixing screws should be secured against rotation</p>
K6	M4	<p>For screws to DIN 7984-8.8</p> <p>Max. tightening torque in Nm:</p> <p>M4 = 2 M5 = 4 M6 = 8 M8 = 12 M10 = 35</p> <p>If there is a possibility of settling, the fixing screws should be secured against rotation</p>
L1	39,8 mm	
l _{max}	1200 mm	<p>Maximum length of single-piece guideways; longer guideways are supplied in several sections and are marked accordingly.</p> <p>Maximum single-piece guideway length of 6 m by agreement.</p>
N3	2,57 mm	<p>Maximum permissible screw depth for lubrication connector: 5,5 mm</p>
N4	2,57 mm	<p>Maximum permissible screw depth for lubrication connector: 5,5 mm</p>
T5	7 mm	
T6	5,8 mm	
W6	6 mm	Width across flats
mw	0,2 kg	Mass of carriage
ms	1,44 kg/m	Mass of guideway
		<p>Calculation of basic load rating according to DIN 636, increased basic dynamic load rating possible on the basis of practical experience.</p>



C	7200 N	Basic dynamic load rating
C ₀	14500 N	Basic static load rating
M _{0x}	150 Nm	Static moment rating about X axis
M _{0y}	100 Nm	Static moment rating about Y axis
M _{0z}	100 Nm	Static moment rating about Z axis

The new carriages cannot be used on the previous guideways TKVD15(-U)

KUVE20-B



Figure 1 , Figure 2 , Figure 3 , Figure 4 , Figure 5 , Figure 6 , Figure 7

H	30 mm	
B	63 mm	
L	69,8 mm	
1)		Locating face
2)		Marking
3)		Lubrication nipple with tapered head to DIN 71 412-B M5 is supplied loose
A1	21,5 mm	
A2	5 mm	
A3	7,7 mm	
A4	4,6 mm	
aL max	53 mm	a L and a R are dependent on the length l max of the guideway
aL min	20 mm	a L and a R are dependent on the length l max of the guideway
aR max	53 mm	a L and a R are dependent on the length l max of the guideway
aR min	20 mm	a L and a R are dependent on the length l max of the guideway
b	20 mm	Tolerance: -0,005 / -0,03
G2	M6	For screws to DIN ISO 4762-12.9 Max. tightening torque in Nm: M5 = 5,8 M6 = 10 M8 = 24 M10 = 41 M12 = 83 M14 = 140 If there is a possibility of settling, the fixing screws should be secured against rotation.
h	17 mm	
H1	4,5 mm	
h1	9,1 mm	
H4	11 mm	
H5	5,25 mm	
J _B	53 mm	
J _L	40 mm	
j _L	60 mm	
J _{L6}	9,4 mm	
J _{LZ}	35 mm	
K1	M5	For screws to DIN ISO 4762-12.9

		<p>Max. tightening torque in Nm:</p> <p>M3 = 2,5</p> <p>M4 = 5</p> <p>M5 = 10</p> <p>M6 = 17</p> <p>M8 = 41</p> <p>M10 = 83</p> <p>M12 = 140</p> <p>M14 = 220</p> <p>M16 = 340</p> <p>If there is a possibility of settling, the fixing screws should be secured against rotation</p>
K ₃	M5	<p>For screws to DIN ISO 4762-12.9</p> <p>Max. tightening torque in Nm:</p> <p>M3 = 2,5</p> <p>M4 = 5</p> <p>M5 = 10</p> <p>M6 = 17</p> <p>M8 = 41</p> <p>M10 = 83</p> <p>M12 = 140</p> <p>M14 = 220</p> <p>M16 = 340</p> <p>If there is a possibility of settling, the fixing screws should be secured against rotation</p>
K ₆	M5	<p>For screws to DIN ISO 4762-12.9</p> <p>Max. tightening torque in Nm:</p> <p>M3 = 2,5</p> <p>M4 = 5</p> <p>M5 = 10</p> <p>M6 = 17</p> <p>M8 = 41</p> <p>M10 = 83</p> <p>M12 = 140</p> <p>M14 = 220</p> <p>M16 = 340</p> <p>If there is a possibility of settling, the fixing screws should be secured against rotation</p>
L ₁	50,4 mm	
l _{max}	2960 mm	<p>Maximum length of single-piece guideways; longer guideways are supplied in several sections and are marked accordingly.</p> <p>Maximum single-piece guideway length of 6 m by agreement.</p>
N ₃	4,5 mm	<p>Maximum permissible screw depth for lubrication connector:</p> <p>7 mm</p>
N ₄	4,5 mm	<p>Maximum permissible screw depth for lubrication connector:</p> <p>5,5 mm</p>
T ₅	10 mm	
T ₆	7,5 mm	
W ₆	6 mm	Width across flats



mw	0,44 kg	Mass of carriage
ms	2,2 kg/m	Mass of guideway
		Calculation of basic load rating according to DIN 636, increased basic dynamic load rating possible on the basis of practical experience.
C	13100 N	Basic dynamic load rating
C ₀	27000 N	Basic static load rating
M _{0x}	332 Nm	Static moment rating about X axis
M _{0y}	240 Nm	Static moment rating about Y axis
M _{0z}	240 Nm	Static moment rating about Z axis

KUVE25-B



Figure 1 , Figure 2 , Figure 3 , Figure 4 , Figure 5 , Figure 6 , Figure 7

H	36 mm	
B	70 mm	
L	81,7 mm	
1)		Locating face
2)		Marking
3)		Lubrication nipple with tapered head to DIN 71 412-B M6 is supplied loose
A1	23,5 mm	
A2	6,5 mm	
A3	11 mm	
A4	6,5 mm	
aL max	53 mm	a L and a R are dependent on the length l max of the guideway
aL min	20 mm	a L and a R are dependent on the length l max of the guideway
aR max	53 mm	a L and a R are dependent on the length l max of the guideway
aR min	20 mm	a L and a R are dependent on the length l max of the guideway
b	23 mm	Tolerance: -0,005 / -0,03
G2	M8	For screws to DIN ISO 4762-12.9 Max. tightening torque in Nm: M5 = 5,8 M6 = 10 M8 = 24 M10 = 41 M12 = 83 M14 = 140 If there is a possibility of settling, the fixing screws should be secured against rotation.
h	18,7 mm	
H1	5,1 mm	
h1	8,7 mm	
H4	10,9 mm	
H5	5,25 mm	
J _B	57 mm	
J _L	45 mm	
j _L	60 mm	
JL6	12,85 mm	
JLZ	40 mm	
K1	M6	For screws to DIN ISO 4762-12.9

		<p>Max. tightening torque in Nm:</p> <p>M3 = 2,5</p> <p>M4 = 5</p> <p>M5 = 10</p> <p>M6 = 17</p> <p>M8 = 41</p> <p>M10 = 83</p> <p>M12 = 140</p> <p>M14 = 220</p> <p>M16 = 340</p> <p>If there is a possibility of settling, the fixing screws should be secured against rotation</p>
K3	M6	<p>For screws to DIN ISO 4762-12.9</p> <p>Max. tightening torque in Nm:</p> <p>M3 = 2,5</p> <p>M4 = 5</p> <p>M5 = 10</p> <p>M6 = 17</p> <p>M8 = 41</p> <p>M10 = 83</p> <p>M12 = 140</p> <p>M14 = 220</p> <p>M16 = 340</p> <p>If there is a possibility of settling, the fixing screws should be secured against rotation</p>
K6	M6	<p>For screws to DIN ISO 4762-12.9</p> <p>Max. tightening torque in Nm:</p> <p>M3 = 2,5</p> <p>M4 = 5</p> <p>M5 = 10</p> <p>M6 = 17</p> <p>M8 = 41</p> <p>M10 = 83</p> <p>M12 = 140</p> <p>M14 = 220</p> <p>M16 = 340</p> <p>If there is a possibility of settling, the fixing screws should be secured against rotation</p>
L1	60,7 mm	
l _{max}	2960 mm	<p>Maximum length of single-piece guideways; longer guideways are supplied in several sections and are marked accordingly.</p> <p>Maximum single-piece guideway length of 6 m by agreement.</p>
N3	5,5 mm	<p>Maximum permissible screw depth for lubrication connector:</p> <p>7 mm</p>
N4	5,6 mm	<p>Maximum permissible screw depth for lubrication connector:</p> <p>7 mm</p>
T5	10 mm	
T6	10 mm	
W6	6 mm	Width across flats



mw	0,68 kg	Mass of carriage
ms	2,7 kg/m	Mass of guideway
		Calculation of basic load rating according to DIN 636, increased basic dynamic load rating possible on the basis of practical experience.
C	17900 N	Basic dynamic load rating
C ₀	37000 N	Basic static load rating
M _{0x}	510 Nm	Static moment rating about X axis
M _{0y}	395 Nm	Static moment rating about Y axis
M _{0z}	395 Nm	Static moment rating about Z axis

KUVE30-B

Figure 1 , Figure 2 , Figure 3 , Figure 4 , Figure 5 , Figure 6 , Figure 7

H	42 mm	
B	90 mm	
L	97,4 mm	
1)		Locating face
2)		Marking
3)		Lubrication nipple with tapered head to DIN 71 412-B M6 is supplied loose
A ₁	31 mm	
A ₂	9 mm	
A ₃	11,5 mm	
A ₄	7 mm	
a _{L max}	71 mm	a L and a R are dependent on the length l max of the guideway
a _{L min}	20 mm	a L and a R are dependent on the length l max of the guideway
a _{R max}	71 mm	a L and a R are dependent on the length l max of the guideway
a _{R min}	20 mm	a L and a R are dependent on the length l max of the guideway
b	28 mm	Tolerance: -0,005 / -0,03
G ₂	M10	For screws to DIN ISO 4762-12.9 Max. tightening torque in Nm: M5 = 5,8 M6 = 10 M8 = 24 M10 = 41 M12 = 83 M14 = 140 If there is a possibility of settling, the fixing screws should be secured against rotation.
h	23,5 mm	
H ₁	5,9 mm	
h ₁	11,5 mm	
H ₄	13,8 mm	
H ₅	6,25 mm	
J _B	72 mm	
J _L	52 mm	
j _L	80 mm	
J _{L6}	15,5 mm	
J _{LZ}	44 mm	
K ₁	M8	For screws to DIN ISO 4762-12.9 Max. tightening torque in Nm: M3 = 2,5

		<p>M4 = 5 M5 = 10 M6 = 17 M8 = 41 M10 = 83 M12 = 140 M14 = 220 M16 = 340</p> <p>If there is a possibility of settling, the fixing screws should be secured against rotation</p>
K3	M8	<p>For screws to DIN ISO 4762-12.9 Max. tightening torque in Nm: M3 = 2,5 M4 = 5 M5 = 10 M6 = 17 M8 = 41 M10 = 83 M12 = 140 M14 = 220 M16 = 340</p> <p>If there is a possibility of settling, the fixing screws should be secured against rotation</p>
K6	M8	<p>For screws to DIN ISO 4762-12.9 Max. tightening torque in Nm: M3 = 2,5 M4 = 5 M5 = 10 M6 = 17 M8 = 41 M10 = 83 M12 = 140 M14 = 220 M16 = 340</p> <p>If there is a possibility of settling, the fixing screws should be secured against rotation</p>
L1	72 mm	
l _{max}	2960 mm	<p>Maximum length of single-piece guideways; longer guideways are supplied in several sections and are marked accordingly. Maximum single-piece guideway length of 6 m by agreement.</p>
N3	5,5 mm	Maximum permissible screw depth for lubrication connector: 7 mm
N4	5,5 mm	Maximum permissible screw depth for lubrication connector: 7 mm
T5	12 mm	
T6	11,5 mm	
W6	6 mm	Width across flats
mw	1,2 kg	Mass of carriage



ms	4,3 kg/m	Mass of guideway Calculation of basic load rating according to DIN 636, increased basic dynamic load rating possible on the basis of practical experience.
C	27500 N	Basic dynamic load rating
C ₀	55000 N	Basic static load rating
M _{0x}	970 Nm	Static moment rating about X axis
M _{0y}	660 Nm	Static moment rating about Y axis
M _{0z}	660 Nm	Static moment rating about Z axis

KUVE35-B

Figure 1 , Figure 2 , Figure 3 , Figure 4 , Figure 5 , Figure 6 , Figure 7

H	48 mm	
B	100 mm	
L	110,4 mm	
1)		Locating face
2)		Marking
3)		Lubrication nipple with tapered head to DIN 71 412-B M6 is supplied loose
A ₁	33 mm	
A ₂	9 mm	
A ₃	12,3 mm	
A ₄	11 mm	
a _{L max}	71 mm	a L and a R are dependent on the length l max of the guideway
a _{L min}	20 mm	a L and a R are dependent on the length l max of the guideway
a _{R max}	71 mm	a L and a R are dependent on the length l max of the guideway
a _{R min}	20 mm	a L and a R are dependent on the length l max of the guideway
b	34 mm	Tolerance: -0,005 / -0,03
G ₂	M10	For screws to DIN ISO 4762-12.9 Max. tightening torque in Nm: M5 = 5,8 M6 = 10 M8 = 24 M10 = 41 M12 = 83 M14 = 140 If there is a possibility of settling, the fixing screws should be secured against rotation.
h	27 mm	
H ₁	6,7 mm	
h ₁	15 mm	
H ₄	14,3 mm	
H ₅	6,75 mm	
J _B	82 mm	
J _L	62 mm	
j _L	80 mm	
J _{L6}	16 mm	
J _{LZ}	52 mm	
K ₁	M8	For screws to DIN ISO 4762-12.9 Max. tightening torque in Nm: M3 = 2,5

		<p>M4 = 5 M5 = 10 M6 = 17 M8 = 41 M10 = 83 M12 = 140 M14 = 220 M16 = 340</p> <p>If there is a possibility of settling, the fixing screws should be secured against rotation</p>
K3	M8	<p>For screws to DIN ISO 4762-12.9 Max. tightening torque in Nm: M3 = 2,5 M4 = 5 M5 = 10 M6 = 17 M8 = 41 M10 = 83 M12 = 140 M14 = 220 M16 = 340</p> <p>If there is a possibility of settling, the fixing screws should be secured against rotation</p>
K6	M8	<p>For screws to DIN ISO 4762-12.9 Max. tightening torque in Nm: M3 = 2,5 M4 = 5 M5 = 10 M6 = 17 M8 = 41 M10 = 83 M12 = 140 M14 = 220 M16 = 340</p> <p>If there is a possibility of settling, the fixing screws should be secured against rotation</p>
L1	80 mm	
l _{max}	2960 mm	<p>Maximum length of single-piece guideways; longer guideways are supplied in several sections and are marked accordingly. Maximum single-piece guideway length of 6 m by agreement.</p>
N3	5,5 mm	Maximum permissible screw depth for lubrication connector: 7 mm
N4	5,5 mm	Maximum permissible screw depth for lubrication connector: 7 mm
T5	13 mm	
T6	12,3 mm	
W6	6 mm	Width across flats
mw	1,75 kg	Mass of carriage



ms	5,7 kg/m	Mass of guideway Calculation of basic load rating according to DIN 636, increased basic dynamic load rating possible on the basis of practical experience.
C	38000 N	Basic dynamic load rating
C ₀	72000 N	Basic static load rating
M _{0x}	1465 Nm	Static moment rating about X axis
M _{0y}	1020 Nm	Static moment rating about Y axis
M _{0z}	1020 Nm	Static moment rating about Z axis

KUVE45-B

Figure 1 , Figure 2 , Figure 3 , Figure 4 , Figure 5 , Figure 6 , Figure 7

H	60 mm	
B	120 mm	
L	139 mm	
1)		Locating face
2)		Marking
3)		Lubrication nipple with tapered head to DIN 71 412-B M6 is supplied loose
A ₁	37,5 mm	
A ₂	10 mm	
A ₃	16,5 mm	
A ₄	16,5 mm	
a _{L max}	94 mm	a L and a R are dependent on the length l max of the guideway
a _{L min}	20 mm	a L and a R are dependent on the length l max of the guideway
a _{R max}	94 mm	a L and a R are dependent on the length l max of the guideway
a _{R min}	20 mm	a L and a R are dependent on the length l max of the guideway
b	45 mm	Tolerance: -0,005 / -0,03
G ₂	M12	For screws to DIN ISO 4762-12.9 Max. tightening torque in Nm: M5 = 5,8 M6 = 10 M8 = 24 M10 = 41 M12 = 83 M14 = 140 If there is a possibility of settling, the fixing screws should be secured against rotation.
h	34,2 mm	
H ₁	9,7 mm	
h ₁	16,2 mm	
H ₄	19,9 mm	
H ₅	9,25 mm	
J _B	100 mm	
J _L	80 mm	
j _L	105 mm	
J _{L6}	19,25 mm	
J _{LZ}	60 mm	
K ₁	M12	For screws to DIN ISO 4762-12.9 Max. tightening torque in Nm: M3 = 2,5

		<p>M4 = 5 M5 = 10 M6 = 17 M8 = 41 M10 = 83 M12 = 140 M14 = 220 M16 = 340</p> <p>If there is a possibility of settling, the fixing screws should be secured against rotation</p>
K3	M10	<p>For screws to DIN ISO 4762-12.9</p> <p>Max. tightening torque in Nm:</p> <p>M3 = 2,5 M4 = 5 M5 = 10 M6 = 17 M8 = 41 M10 = 83 M12 = 140 M14 = 220 M16 = 340</p> <p>If there is a possibility of settling, the fixing screws should be secured against rotation</p>
K6	M10	<p>For screws to DIN ISO 4762-12.9</p> <p>Max. tightening torque in Nm:</p> <p>M3 = 2,5 M4 = 5 M5 = 10 M6 = 17 M8 = 41 M10 = 83 M12 = 140 M14 = 220 M16 = 340</p> <p>If there is a possibility of settling, the fixing screws should be secured against rotation</p>
L1	102,5 mm	
l _{max}	2940 mm	<p>Maximum length of single-piece guideways; longer guideways are supplied in several sections and are marked accordingly.</p> <p>Maximum single-piece guideway length of 6 m by agreement.</p>
N3	5,5 mm	Maximum permissible screw depth for lubrication connector: 7 mm
N4	5,5 mm	Maximum permissible screw depth for lubrication connector: 7 mm
T5	15 mm	
T6	15 mm	
W6	6 mm	Width across flats
mw	3,3 kg	Mass of carriage

ms	9,2 kg/m	Mass of guideway Calculation of basic load rating according to DIN 636, increased basic dynamic load rating possible on the basis of practical experience.
C	69000 N	Basic dynamic load rating
C ₀	141000 N	Basic static load rating
M _{0x}	3610 Nm	Static moment rating about X axis
M _{0y}	2485 Nm	Static moment rating about Y axis
M _{0z}	2485 Nm	Static moment rating about Z axis

KUVE55-B

Figure 1 , Figure 2 , Figure 3 , Figure 4 , Figure 5 , Figure 6 , Figure 7

H	70 mm	
B	140 mm	
L	172 mm	
1)		Locating face
2)		Marking
3)		Lubrication nipple with tapered head to DIN 71 412-B M6 is supplied loose
A ₁	43,5 mm	
A ₂	12 mm	
A ₃	15 mm	
A ₄	15 mm	
a _{L max}	107 mm	a L and a R are dependent on the length l max of the guideway
a _{L min}	20 mm	a L and a R are dependent on the length l max of the guideway
a _{R max}	107 mm	a L and a R are dependent on the length l max of the guideway
a _{R min}	20 mm	a L and a R are dependent on the length l max of the guideway
b	53 mm	Tolerance: -0,005 / -0,03
G ₂	M14	For screws to DIN ISO 4762-12.9 Max. tightening torque in Nm: M5 = 5,8 M6 = 10 M8 = 24 M10 = 41 M12 = 83 M14 = 140 If there is a possibility of settling, the fixing screws should be secured against rotation.
h	41,5 mm	
H ₁	13,5 mm	
h ₁	19,5 mm	
H ₄	22,7 mm	
H ₅	11,25 mm	
J _B	116 mm	
J _L	95 mm	
j _L	120 mm	
J _{L6}	30,5 mm	
J _{LZ}	70 mm	
K ₁	M14	For screws to DIN ISO 4762-12.9 Max. tightening torque in Nm: M3 = 2,5

		<p>M4 = 5 M5 = 10 M6 = 17 M8 = 41 M10 = 83 M12 = 140 M14 = 220 M16 = 340</p> <p>If there is a possibility of settling, the fixing screws should be secured against rotation</p>
K3	M12	<p>For screws to DIN ISO 4762-12.9 Max. tightening torque in Nm: M3 = 2,5 M4 = 5 M5 = 10 M6 = 17 M8 = 41 M10 = 83 M12 = 140 M14 = 220 M16 = 340</p> <p>If there is a possibility of settling, the fixing screws should be secured against rotation</p>
K6	M12	<p>For screws to DIN ISO 4762-12.9 Max. tightening torque in Nm: M3 = 2,5 M4 = 5 M5 = 10 M6 = 17 M8 = 41 M10 = 83 M12 = 140 M14 = 220 M16 = 340</p> <p>If there is a possibility of settling, the fixing screws should be secured against rotation</p>
L1	132 mm	
l _{max}	2520 mm	<p>Maximum length of single-piece guideways; longer guideways are supplied in several sections and are marked accordingly. Maximum single-piece guideway length of 6 m by agreement.</p>
N3	5,5 mm	Maximum permissible screw depth for lubrication connector: 7 mm
N4	5,5 mm	Maximum permissible screw depth for lubrication connector: 7 mm
T5	21 mm	
T6	18 mm	
W6	6 mm	Width across flats
mw	5,5 kg	Mass of carriage



ms	14 kg/m	Mass of guideway Calculation of basic load rating according to DIN 636, increased basic dynamic load rating possible on the basis of practical experience.
C	104000 N	Basic dynamic load rating
C ₀	213000 N	Basic static load rating
M _{0x}	5600 Nm	Static moment rating about X axis
M _{0y}	2730 Nm	Static moment rating about Y axis
M _{0z}	2730 Nm	Static moment rating about Z axis